

GE Healthcare

# Vivid S5

Cardiovascular ultrasound system



# Versatility.

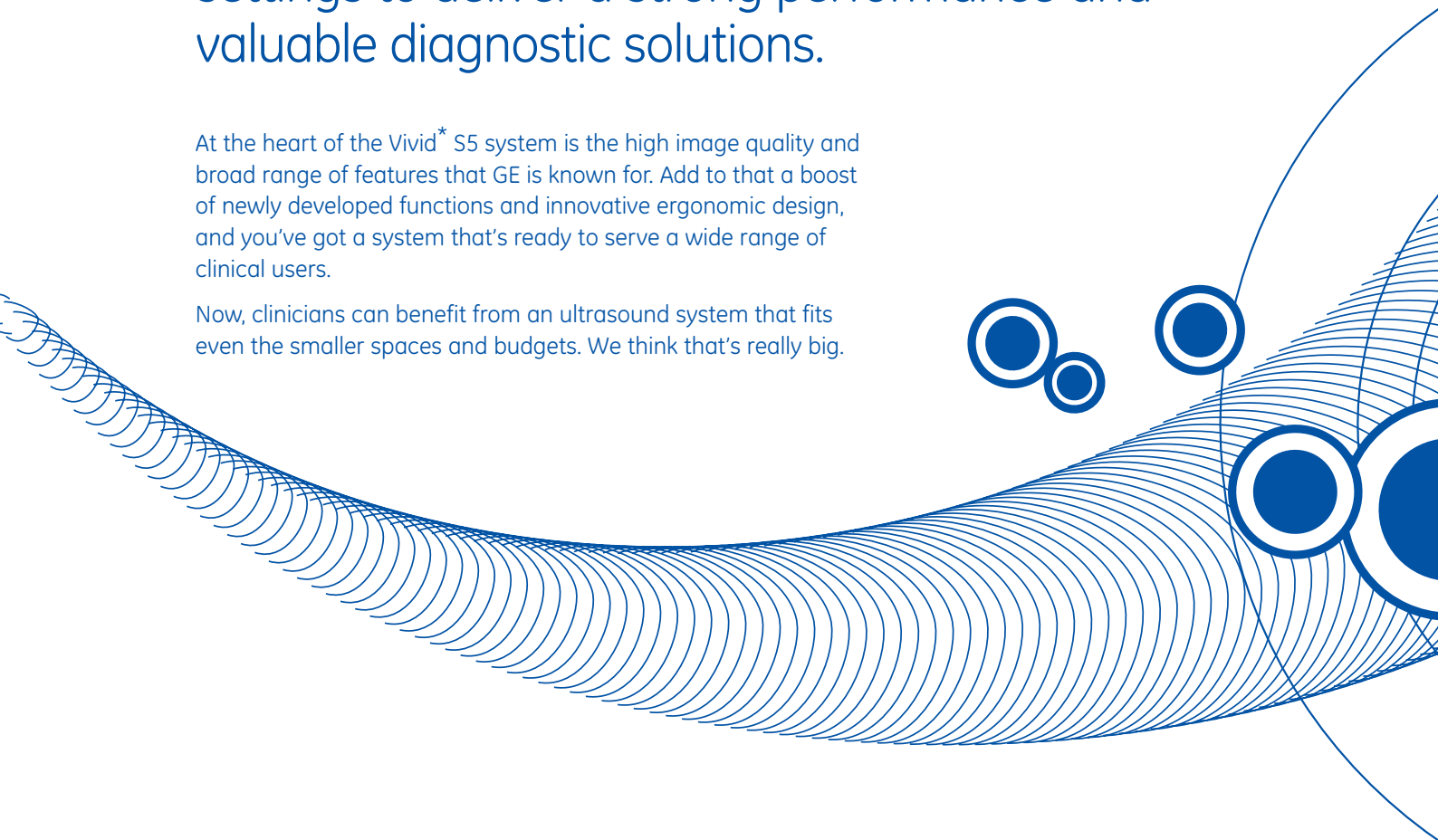


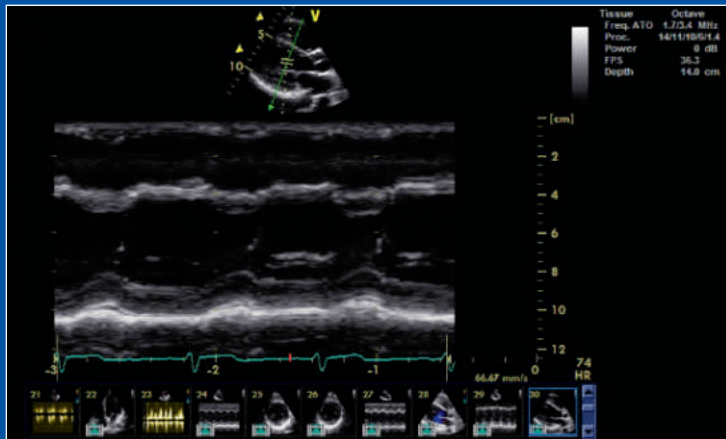


It's a new design concept – one that leverages our miniaturization expertise gained from the Vivid *i* and our performance expertise of the console Vivid 7. The versatile Vivid S5 fits in a variety of clinical settings to deliver a strong performance and valuable diagnostic solutions.

At the heart of the Vivid<sup>\*</sup> S5 system is the high image quality and broad range of features that GE is known for. Add to that a boost of newly developed functions and innovative ergonomic design, and you've got a system that's ready to serve a wide range of clinical users.

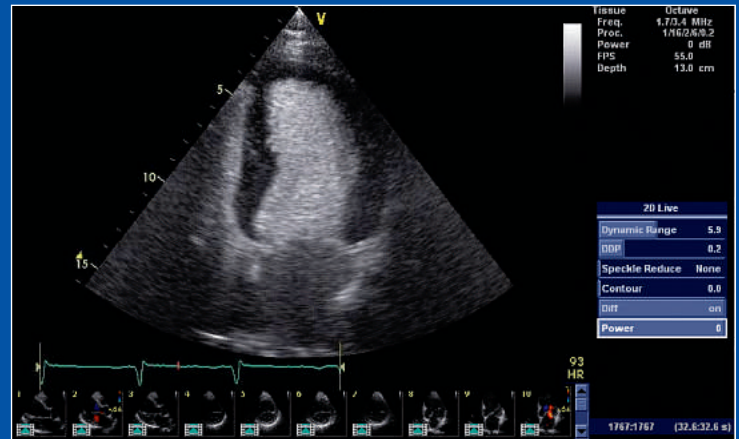
Now, clinicians can benefit from an ultrasound system that fits even the smaller spaces and budgets. We think that's really big.





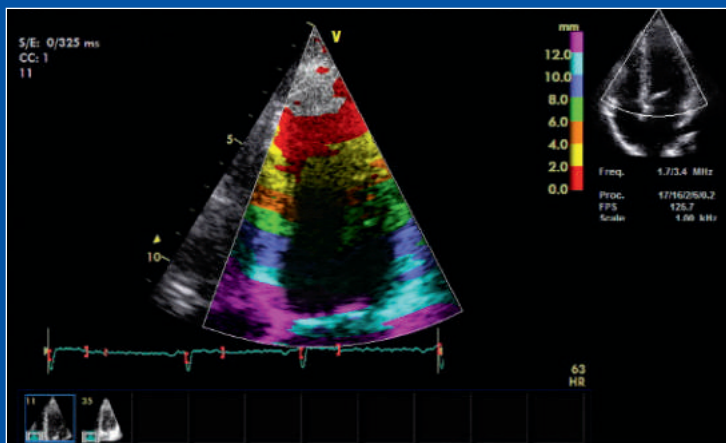
### Anatomical M-Mode

The Anatomical M-Mode option allows correct measurements in non-standard planes.



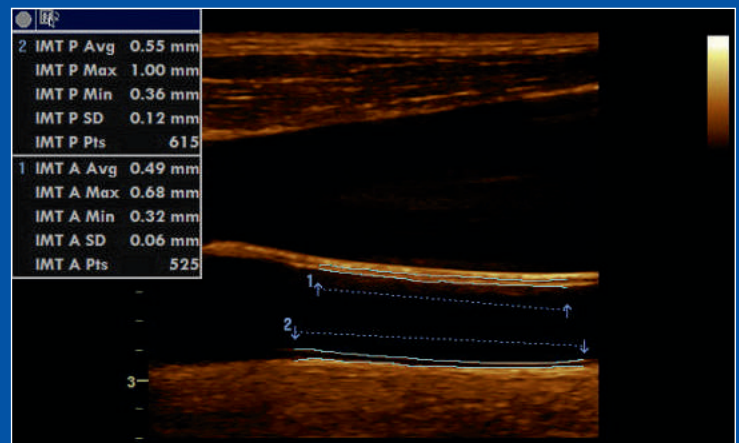
### LVO Contrast\*

Get enhanced visualization of the LV border which is important for assisting in the diagnosis of abnormalities — plus wall-motion analysis and ejection fraction calculations.



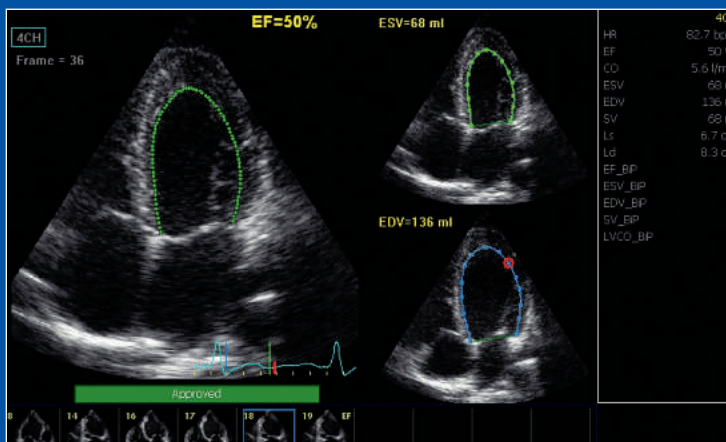
### TT

Tissue Tracking (TT) assists in recognizing global and regional left ventricular wall motion abnormalities.



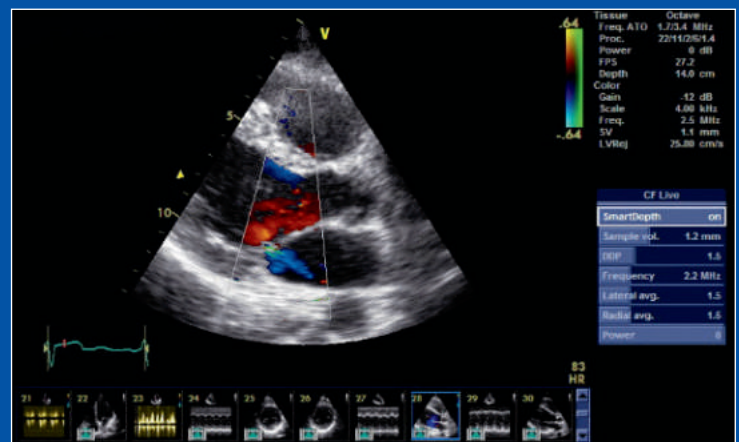
### IMT Measurement

Reduce the time and suggest better credibility for the carotid artery's intima-media thickness measurements with IMT measuring technology.



### AutoEF

Assists in measuring the most commonly used parameter to describe the LV function.



### Smart Depth

By adding Smart Depth in 2D and Color mode, the Vivid S5 automatically changes the frequency, focus position and transmit pattern as the user changes depth. This helps ensure the highest resolution at shallow depths and optimal penetration at greater depths. Vital for scanning children, it helps operators save time and increase standardization among users.

\*All contrast agents should be used as described on the label by the contrast agent manufacturers.

The image features a close-up of an ultrasound machine's control panel and monitor. The monitor at the top right shows a grayscale ultrasound image with a red overlay, and a software interface with various buttons like 'Frame', 'Baseline', 'Simultan.', and 'Invert'. Below the monitor is a control panel with a keyboard, several buttons (Patient, Probe, Protocol, Review, Worksheet, Report, Active Mode, 2D, MM, Cursor, Flex, Auto), and a trackball. The machine is white with black accents. A decorative blue wireframe graphic is on the left side of the page.

# Bring your patients into focus.

Advanced cardiac performance and broad shared-service capabilities — including vascular, abdominal, pediatric/fetal and OB — allow you to concentrate more on the patient and less on the system.

## Advanced features come standard

Parametric imaging and its Quantitative Analysis allow in-depth echocardiographic analysis. Automated tools are there to support you. Your image quality remains protected with our raw-data-storage. EchoPAC<sup>®</sup> PC allows instant access to ultrasound raw data provided by the Vivid S5 for comprehensive review, analysis and post-processing capabilities. Also through enhanced connectivity and media support, data is shared more smoothly within networks. The “Flex” key, next to the trackball on the keyboard, can be assigned to assume the function of more distant keys, for minimal effort, increased speed, and ease of use. A standby power mode battery and multiple probe options add to the Vivid S5’s usability.

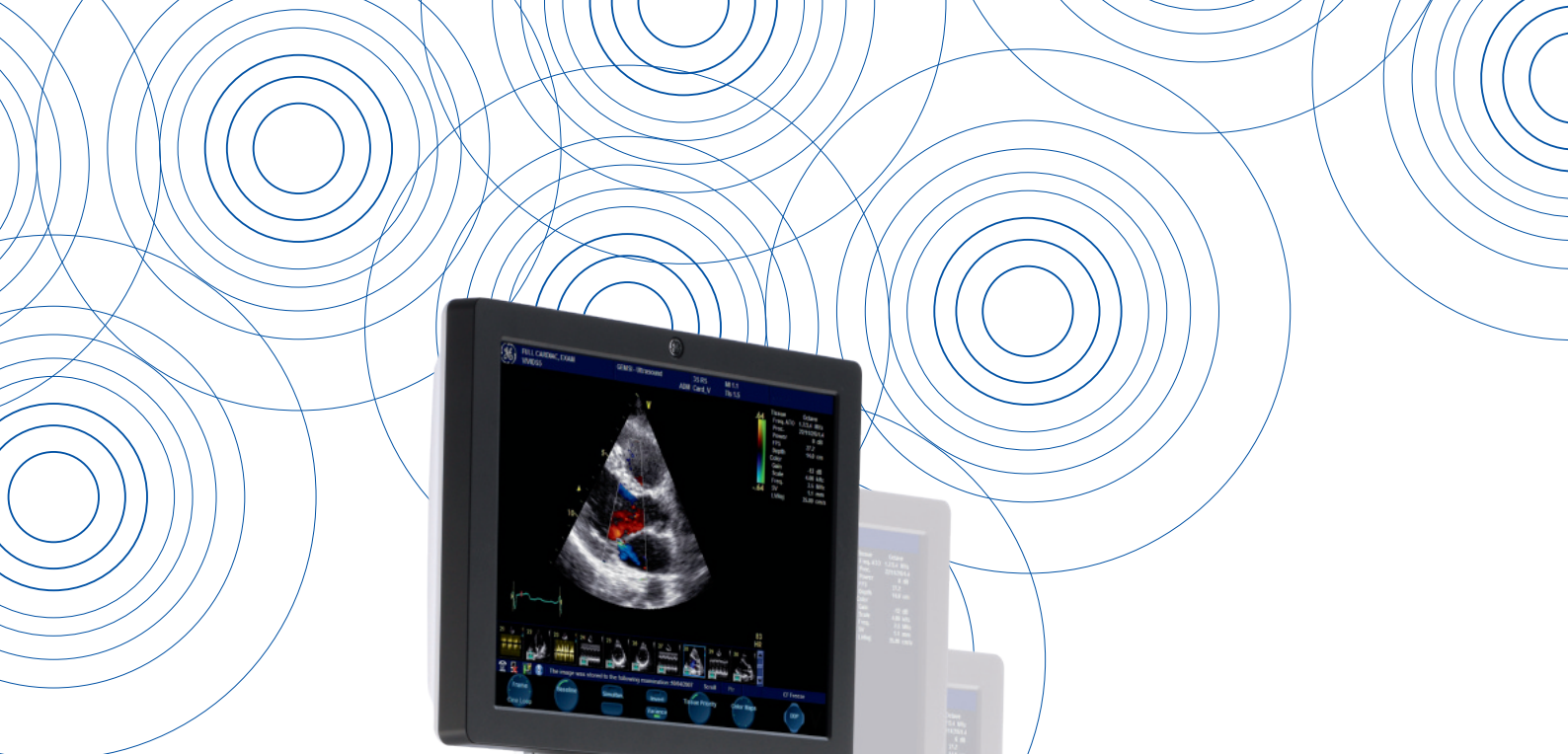


# At your convenience.

Fits in tight spaces with the performance you'd expect from a larger console. Vivid S5 puts you in a very comfortable position.

The ergonomic design of the Vivid S5 can reduce fatigue and discomfort, while increasing efficiency and well-being. Our "Flex-Fit" mechanism (up and in, down and out) enables continuous pivoting height adjustment of the control panel, while keeping optimal distance from the user and leaving legroom for standing or sitting positions. And the horizontally swiveling keyboard is within easy reach for quick operation.

The low weight and size and fold-down mechanism of the display allow easy movability. With its greater mobility and innovative design, the Vivid S5 facilitates the support of improved health for both patients and staff. That's a nice place to be in.



©2011 General Electric Company – All rights reserved.

General Electric Company reserves the right to make changes in specifications and features shown herein, or discontinue the product described at any time without notice or obligation.

GE and GE Monogram are trademarks of General Electric Company.

\* Vivid and EchoPAC are trademarks of GE Medical Systems Ultrasound & Primary Care Diagnostics, LLC.

GE Medical Systems Ultrasound & Primary Care Diagnostics, LLC, a General Electric Company, doing business as GE Healthcare.

## About GE Healthcare

GE Healthcare provides transformational medical technologies and services that are shaping a new age of patient care. Our broad expertise in medical imaging and information technologies, medical diagnostics, patient monitoring systems, drug discovery, biopharmaceutical manufacturing technologies, performance improvement and performance solutions services helps our customers to deliver better care to more people around the world at a lower cost. In addition, we partner with healthcare leaders, striving to leverage the global policy change necessary to implement a successful shift to sustainable healthcare systems.

Our “healthymagination” vision for the future invites the world to join us on our journey as we continuously develop innovations focused on reducing costs, increasing access, and improving quality around the world. Headquartered in the United Kingdom, GE Healthcare is a unit of General Electric Company (NYSE: GE). Worldwide, GE Healthcare employees are committed to serving healthcare professionals and their patients in more than 100 countries. For more information about GE Healthcare, visit our website at [www.gehealthcare.com](http://www.gehealthcare.com)

### UNITED KINGDOM

GE Medical Systems Ultrasound  
71 Great North Road  
Hatfield  
Hertfordshire  
AL9 5EN  
T 44 1707 263570  
F 44 1707 260065

### EUROPE

GE Ultraschall Deutschland GmbH  
Beethovenstr. 239, 42655 Solingen  
Germany  
T 49 212-28 02-0  
F 49 212-28 02 28

### AMERICAS

GE Healthcare  
9900 Innovation Drive  
Wauwatosa, WI 53226  
U.S.A.  
T 1 888 202 5582

### ASIA

GE Healthcare Clinical  
Systems ASIA  
1105-1108 Maxdo Center  
8 XingYi Road, Shanghai  
200336  
T 86 21 5257 4640  
F 86 21 5208 0582

[www.gehealthcare.com](http://www.gehealthcare.com)



GE imagination at work